

MICRO SWITCH
a Honeywell Division

SWITCH - BASIC

CATALOG LISTING
V7-1B37D8

CW-B4729

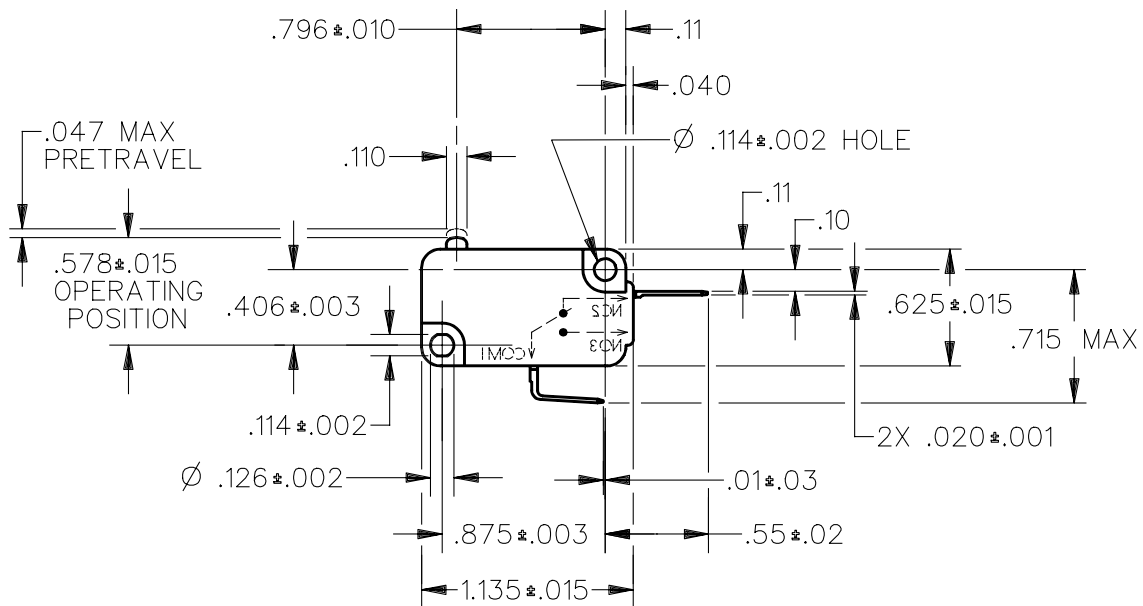
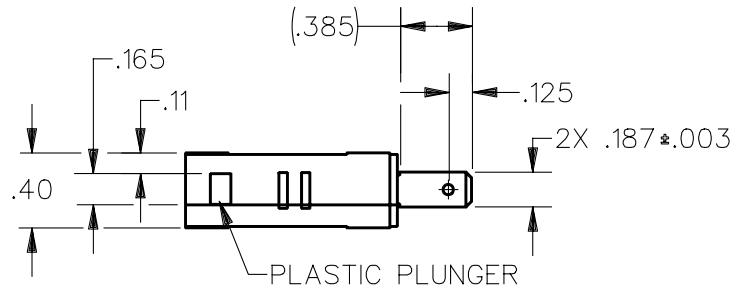
FED. MFG. CODE 91929

CATALOG LISTING
V7-1B37D8
PAGE 1 OF 1
RELEASE NO. PR-19239
REPLACES
ISSUE
M
3

REVISIONS

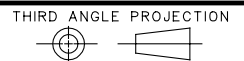
A	CO-76103	LJF	5 OCT 93
B	CO-92478	TSM	22 APR 98

CHECK
CHECK
5 JUN 91
D A W
5 JUN 91
WJC
5 JUN 91



ANSI Y14.5M-1982 APPLIES

THIS DRAWING COVERS A PROPRIETARY ITEM AND IS THE PROPERTY OF MICRO SWITCH, A DIVISION OF HONEYWELL. THIS DRAWING IS NOT TO BE COPIED OR USED WITHOUT THE APPROVAL OF MICRO SWITCH.



CHARACTERISTICS	ELECTRICAL DATA	SCALE FULL	DO NOT SCALE PRINT
OPERATING FORCE --- 150 GRAMS MAX	CONTACT ARRANGEMENT S P N C	UNLESS OTHERWISE SPECIFIED TOLERANCES ARE	
RELEASE FORCE --- 25 GRAMS MIN	L156 11A 1/3HP 125, 250 OR 277 VAC 1/2A 125 VDC, 1/4A 250 VDC 4A 125 VAC "L"	ONE PLACE (.0)	± .030
DIFFERENTIAL TRAVEL --- .002-.010		TWO PLACE (.00)	± .015
OVERTRAVEL --- .050 MIN		THREE PLACE (.000)	± .005
FREE POSITION --- .625 MAX		ANGLES	±
RELEASE TRAVEL --- .010 MIN		WEIGHT	

DDM/CAD
DRAWN